



**VicBooth** Ultra  
by **V/COUSTIC**





## VicBooth Ultra by Vicoustic

Meet the next generation of professional production booths. Versatile, modular, with excellent acoustic performance, it's a sound insulation booth for music, vocals, recordings, translation, industry and gaming that will not just meet your needs but exceed them.

**VicBooth Ultra pairs a great design  
with an unbeatable price.**

Copyright 2020 by Vicoustic

No parts of this document might be copied and/or published without the written consent of Vicoustic.

This catalog is continually updated with new and amended details. Vicoustic accepts no liability for any eventuality arising from the use of errors contained in this catalog. Vicoustic reserves the right to correct errors and misprints.

The pictures shown are merely illustrative and might differ from the actual products.



VICBOOTHULTRA | 2 x 2

2	Intro
6	About
8	Highlights
10	Modularity
20	Applications
24	Acoustic Kits
30	Technical Specs
32	Sustainability
34	Vicoustic



VICBOOTHULTRA | 1 x 1



Audio productions tends to take place in either big, open environments where privacy is hard to find or in small spaces where causing noise nuisances or outside noise filtering into the room can be problematic.

If you are looking for a space to rehearse, record or mix music or vocals with sound insulation and acoustic quality, VicBooth Ultra brings it all together, in a room that can change size depending on your needs.

**VicBooth Ultra can achieve noise reduction levels of 30 decibels\* with only 1.1" thick walls.**

\* NOISE ISOLATION CLASS VALUE CALCULATED ACCORDING TO ASTM E413 AND MEASUREMENTS TAKEN ACCORDING TO ASTM E595.

For the VicBooth Ultra standard version we created the internal acoustic conditions to suit most needs, with sound absorbing walls and ceiling. On top of that, we offer advanced options for more demanding professional audio environment application, with the various acoustic kits developed by Vicoustic's technicians.

This new booth was developed by Vicoustic, a leading company in the acoustic solutions industry, with years of experience developing acoustic products for the most demanding audio professionals.



VICBOOTHULTRA | 2 x 2

## highlights

**Acoustic absorption**

The standard version comes with internal acoustic conditions to suit most needs, with sound absorbing walls and ceiling. Vicoustic offers additional acoustic kits for variable acoustic situations.

**Modularity and Expansion**

The modular system of the cabin allows you to design your own booth and grow it into different sizes and update its features.

**Sound insulation**

VicBooth Ultra can achieve noise reduction levels of 30 decibels\* with only 1.1" thick walls.

**Made from recycled materials**

Walls and ceiling in high-performance VicPET Wool, mostly made from recycled plastic bottles.

**Unbeatable price**

All this at an unbeatable price for a professional production booth.



## modularity

VICBOOTHULTRA | 1x1



## Your needs, your design.

VicBooth Ultra was designed to be a modular (and easy to install) solution, offering the ability to fine tune your professional production environment to meet your different needs.

**The modular system of the cabin allows you to design your booth as you wish in just a few steps.**

You can configure your perfect booth at:  
[vicbooth.vicoustic.com/configurator](https://vicbooth.vicoustic.com/configurator)

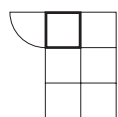
VICBOOTHULTRA | 1x1



Choose the **size**  
and **color** that fits  
your needs

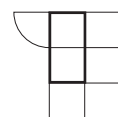
12

VICBOOTHULTRA



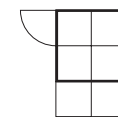
**1 × 1**

Exterior  
1076 × 1030 × 2230 mm  
42.3" × 40.6" × 87.8"



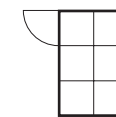
**1 × 2**

Exterior  
1076 × 2030 × 2230 mm  
42.3" × 79.9" × 87.8"



**2 × 2**

Exterior  
2076 × 2030 × 2230 mm  
81.7" × 79.9" × 87.8"



**2 × 3**

Exterior  
2076 × 3030 × 2230 mm  
81.7" × 119.2" × 87.8"



13

VICBOOTHULTRA

# Choose the **door** and **walls**

## Door

EXTERIOR

INTERIOR



Standard Door



Door with  
window



EXTERIOR

INTERIOR



Standard Side



Side with  
Window



Side with  
shelf



Side with  
Window and shelf

## Walls



Side with  
VicFix



# Control Room

VICBOOTHULTRA | 2 x 2



VICBOOTHULTRA | 2 x 2

# Recording Room

**The modularity of this system allows you to configure your space exactly how you want it**

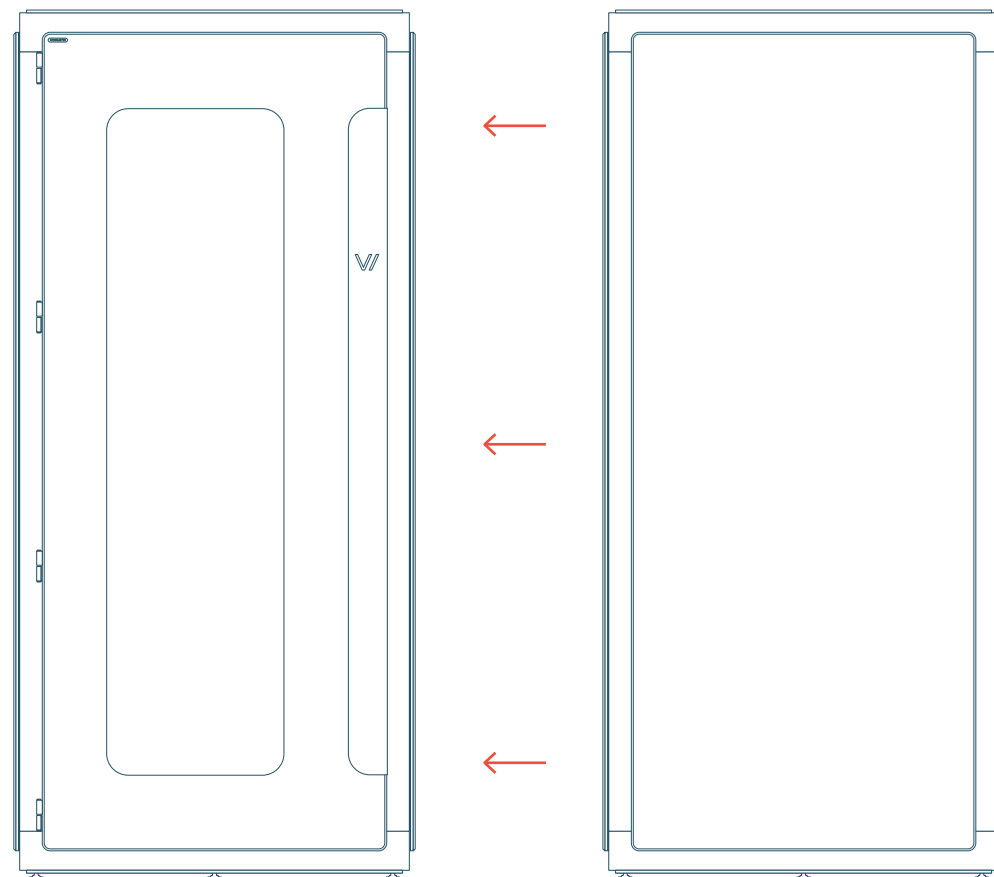
You can have two booths, a control room and a recording room, side by side, with space in between.

This solution offers better sound insulation between the rooms than if they are both in a single unit.

VICBOOTHULTRA | 2 x 2



And, if in a while  
you realize you need  
**more space?**



**Don't worry,**  
you can add new  
modules at any  
time!

It's that easy!

**Music**

Vicoustic's new VicBooth Ultra was specially developed for professional production environments, where performers often need to find an isolated space to produce their work. The booth is perfect for musicians and other audio professionals who want great acoustic results from a modular sound insulation booth.

**Voice recording**

Voiceover and voice performance recordings will sound clearer inside a VicBooth Ultra.

**Translation**

The VicBooth Ultra will make simultaneous interpretation and translation clear and clean in this high-performance solution.

**Education**

For music education in which all music specialities need to work together, the VicBooth Ultra is easy to adjust to any needs. As for physics, acoustics and audio education, it will help students to perceive related theory (psychoacoustics, reverb time, sound image, first reflections).

**Gamers**

VicBooth Ultra will take you to the next level in isolation from the outside world. Immerse yourself completely in your game.

**Alternative applications**

You can adapt your booth to a variety of applications depending on your needs.





22

VICBOOTHULTRA

VICBOOTHULTRA | 2 x 2

VICBOOTHULTRA | 1 x 2



23

VICBOOTHULTRA



VICBOOTHULTRA | 2 x 2

The VicBooth Ultra Standard version comes with sound absorbing walls and ceiling, in order to control specular reflections, flutter echoes and to avoid excessive reverberation within the booth.

**For some applications, you will want to fine tune the booth's internal acoustic conditions by including extra acoustic treatment packs.**



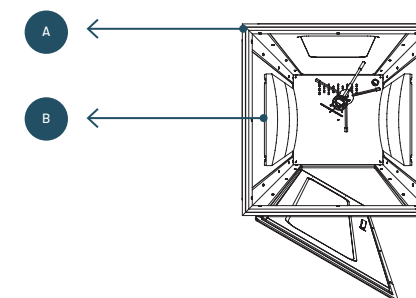
VICBOOTHULTRA | 2 x 2

## Vocal Booth Kit



VICBOOTHULTRA | 1 x 1 (LAYOUT RECOMMENDED)

The human voice can have strong mid- to low-frequency components, so in order to control that, we recommend upgrading the absorption characteristics of the booth.



### This kit contains

- A VicBooth Ultra 1x1
- B Cinema Round Premium (4)



## Practice Room Kit

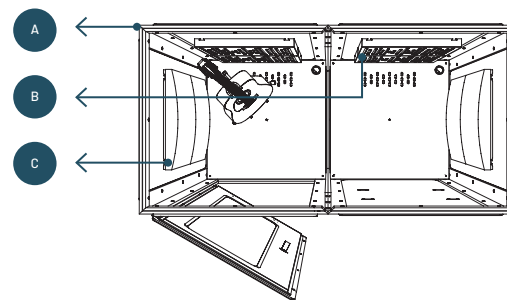


VICBOOTHULTRA | 1x2 | LAYOUT RECOMMENDED

26

VICBOOTHULTRA

Adding the VicPattern Ultra Wavewood to the VicBooth Ultra walls will give you the brightness of high frequencies normally valued by producers.



### This kit contains

- A VicBooth Ultra 1x2
- B VicPatterns Ultra Wavewood (4)
- C Cinema Round Premium (4)

## Control Room Kit

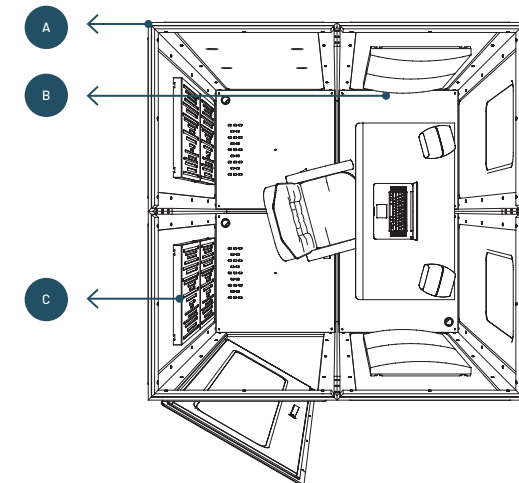


VICBOOTHULTRA | 2x2 | LAYOUT RECOMMENDED

27

VICBOOTHULTRA

This kit will improve first reflections, stereo image definition, sound source localization and will minimize comb-filter effects.



### This kit contains

- A VicBooth Ultra 2x2
- B Cinema Round Premium (4)
- C VicPatterns Ultra Wavewood (4)

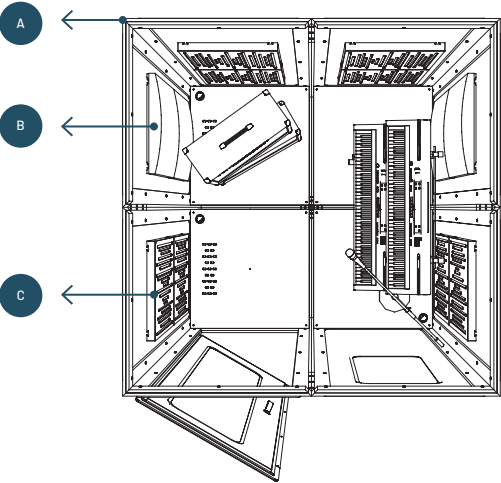


# Recording Room Kit



This kit improves mid and low frequencies of several instrument spectrums by using Cinema Round Premium panels. To compensate for any lack of high frequency components we recommend using VicPattern Ultra Wavewood panels, which will help you achieve a more pleasant and balanced environment.

- This kit contains**
- A VicBooth Ultra 2x2
  - B Cinema Round Premium (4)
  - C VicPatterns Ultra Wavewood (8)



The acoustic kits developed by Vicoustic use **Cinema Round Premium** and **VicPattern Ultra Wavewood** panels.

VicBooth Ultra's side with VicFix come ready with fittings for VicFix System accessories and can accommodate compatible Vicoustic acoustic treatment panels, ensuring that the booth's internal acoustics can be fine-tuned according to the type of professional production environment you need.



## Cinema Round Premium



Cinema Round Premium panels provide a flexible and elegant solution for sound control across a multitude of applications. Combining modern design with maximum acoustic efficiency, the fabric-covered Cinema Round Premium panel is commonly used to control sound reflections and excess reverberation, helping you maximize the performance of your listening space.

<b>Functionality</b>	Absorption
<b>Absorption Frequency Range</b>	Medium and High Frequencies
<b>NRC</b>	0.95
<b>Dimensions</b>	595 x 595 x 70 mm

## VicPattern Ultra Wavewood



The ideal acoustic panel for those who are striving for a balanced sound that can simultaneously control any noise energy in a room, and still manage and create a lively and bright sound.

Made with melamine, a highly durable material, the VicPattern Ultra Wavewood also uses VicPET Wool, a sustainable material that maximizes the acoustic absorbing capabilities of the panel.

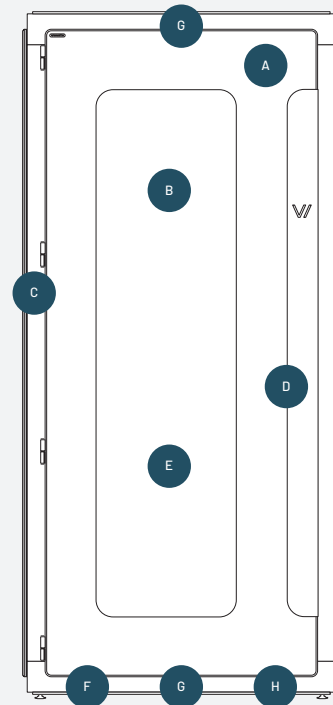
<b>Functionality</b>	Absorption and Diffusion
<b>Absorption Frequency Range</b>	Medium and High Frequencies
<b>NRC</b>	0.70
<b>Dimensions</b>	595 x 595 x 50 mm





# technical specs

VICBOOTHULTRA | 1x1



- A Exterior Finishes**  
MDF with Melamine finish
  - Black
  - Natural Oak
  - White
- B Interior Finishes**  
● Grey felt (100% Wool)
- C Exterior Structure**  
MDF.HLS
- D Exterior Door Handle**  
Coated Steel
- E Door Window**  
Laminated glass
- F Cable Passage**  
ø 70 mm / ø 2.8"
- G Ventilation**  
An Airflow Labirint was design to ensure air circulation within the booth in a passive way
- H Floor**  
Dark Grey needled pile carpet



	Dimensions	Noise Isolation Class
 1 x 1	Ext. 1076 × 1030 × 2230 mm 42.3" × 40.6" × 87.8" Int. 968 × 968 × 2008 mm 38.1" × 38,1" × 79"	NIC* 30 NIC (w/ CRP)** 31
 1 x 2	Ext. 1076 × 2030 × 2230 mm 42.3" × 79.9" × 87.8" Int. 968 × 1968 × 2008 mm 38.1" × 77,5" × 79"	NIC* 31 NIC (w/ CRP)** 32
 2 x 2	Ext. 2076 × 2030 × 2230 mm 81,7" × 79,9" × 87.8" Int. 1968 × 1968 × 2008 mm 77,5" × 77,5" × 79"	NIC* 31 NIC (w/ CRP)** 32
 2 x 3	Ext. 2076 × 3030 × 2230 mm 81,7" × 119,2" × 87.8" Int. 1968 × 2968 × 2008 mm 77,5" × 116,9" × 79"	NIC* tba NIC (w/ CRP)** tba

\*Measurements taken according to ASTM E595 and NIC Value calculated according to ASTM E413. \*\*Measurements were taken with 2 Cinema Round Premium in each wall.



## Cable Passage

Each single unit has a 70mm diameter channel in the floor to accommodate passing cables, even after the booth is assembled, making it easily adaptable for all of your sound situations.



## Airflow Labyrinth

The Airflow Labyrinth was designed to ensure passive air circulation within the booth. There are air passages in the booth's floor and ceiling that circulate the air using body heat: users' body heat brings in new air from the outside through the floor and pushes out old air through the ceiling.



## Mechanical Ventilation

If one needs, VicBooth Ultra can include a mechanical ventilation system that can be attached to the ceiling, ensuring total air renovation of a single unit in less than 2 minutes. The system is designed to ensure a very low noise within the booth of NR21.



Our desire to respect our environment played a major role in how we developed the VicBooth Ultra. It is composed of high-quality melamine combined with MDF and coated with VicPET Wool, a non-woven textile with superb acoustic performance, predominantly made from recycled plastic bottles.

**The use of this innovative acoustic material allows us to recycle the equivalent of 1044 standard plastic bottles (500 ml) for each 1x1 booth we produce.**










The quality of the raw materials not only helps preserve our planet's natural resources, but also allows for the VicBooth Ultra to be more durable and environmentally conscious whilst ensuring great acoustic performance.

In addition, the flat packaging for shipping was designed to produce the minimum waste possible, reducing the transportation carbon footprint.

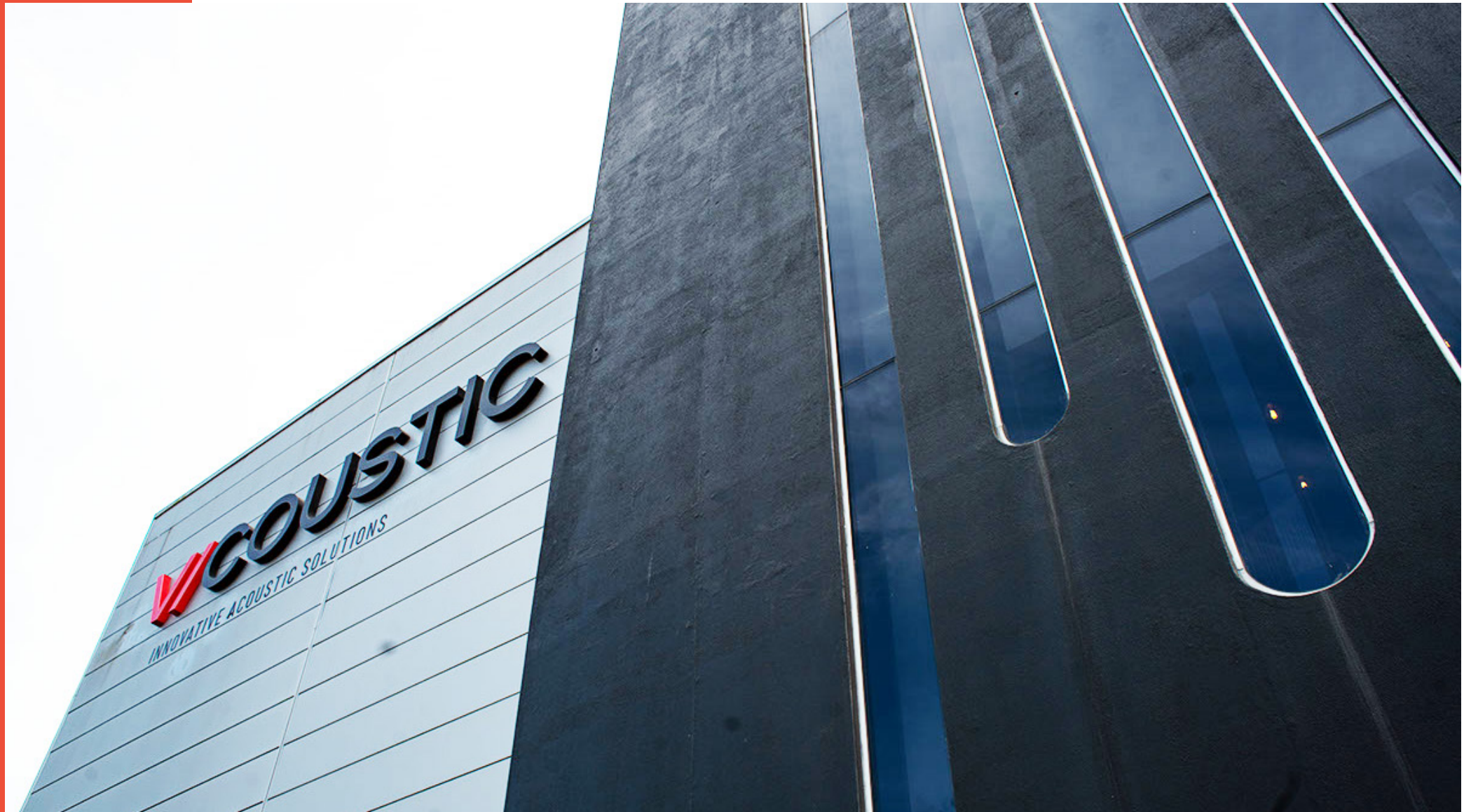


VICBOOTHULTRA | 1x1

## We're recycling the equivalent of 1044 plastic bottles per 1x1 booth

Booth Size	Amount of Plastic bottles	1x  = 100 Bottles
 1x1	<b>1044 Bottles</b>	
 1x2	<b>1784 Bottles</b>	
 2x2	<b>2976 Bottles</b>	
 2x3	<b>4168 Bottles</b>	





**A leading force in the industry, founded in 2007, Vicoustic understands the unique sound dynamics of a room or venue**

So whether it's a Home Cinema Hi-Fi to a professional sound system for radio and television, its expertise for peak acoustic performance is second-to-none. Being at the forefront of acoustic technology, Vicoustic combines engineered systems with stunning design to bring you sound that is free of compromises, but full of high quality performance.

The products from Vicoustic deliver clever and innovative solutions to meet the demands of spaces that require a sophisticated soundscape. Taking on board the high standards of their customers, Vicoustic continuously strives to manufacture products of superior functionality, adaptability, but all the while with a sustainable and environmentally conscious mind-set.



Modular. Versatile. Perfect.

